

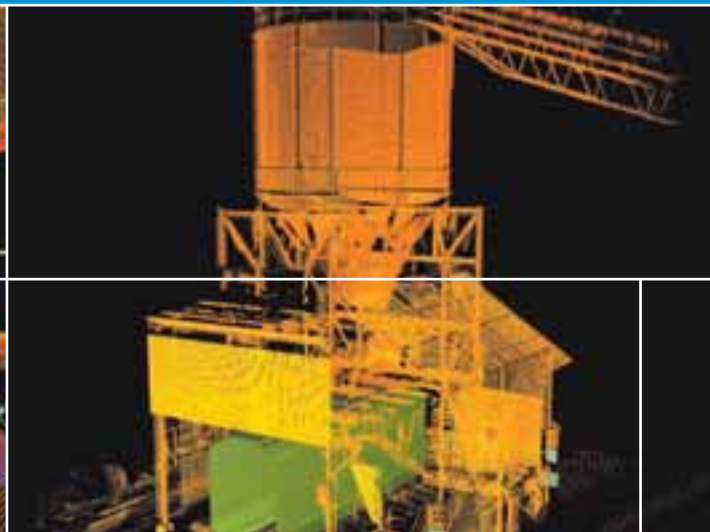
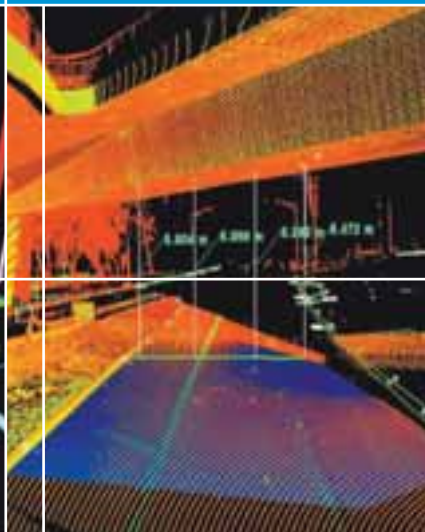
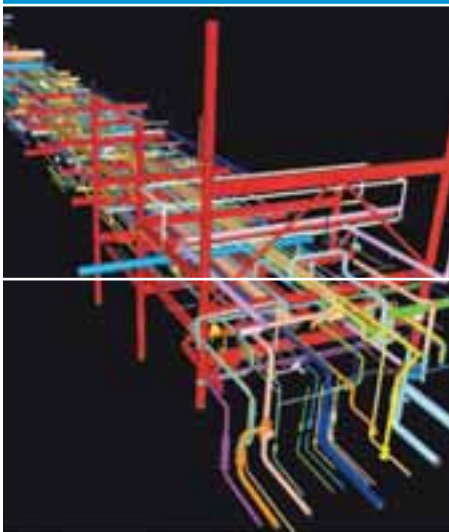
# McMULLENOLAN

Providing a safer, more precise alternative to traditional survey and dimensional control methods, McMullen Nolan's 3D Laser Scanning services is able to capture, visualise and model complex structures, sites and features.

Applicable for any situation requiring complete and accurate data with quick acquisition times, laser scanning operations can be conducted from a distance of 100m with 6mm accuracy acquiring precise data in potentially unsafe working environments in both day and night conditions.

Acquired data can be modelled and rendered for easy integration into CAD and various structural and piping modelling software.

- LAND SURVEY
- HYDROGRAPHIC SURVEY
- 3D LASER SCANNING**
- 3D VISUALISATION
- MAPPING
- SOLID TERRAIN MODELS
- CARTOGRAPHICS
- GIS



## 3D LASER SCANNING

laserscan@mapsurvey.com.au

## HEAD OFFICE

Suite 11 Level 2, 2 Hardy Street South Perth WA 6151

PO BOX 117 South Perth WA 6951

T +61 8 9474 1099 F + 61 8 9474 1093

E maps@mapsurvey.com.au W www.mapsurvey.com.au

# 3D LASER SCANNING

## PUBLIC INFRASTRUCTURE

- Safe scanning of hazardous transit sites, road and rail
- Future planning of transport systems
- Modelling of heritage listed structures

## OFFSHORE OIL & GAS SURVEYS

- Interference/fit checks
- As-built surveys
- Asset management
- Retrofit design and upgrade
- Survey completed in either day or night conditions

## BROWNFIELD AS-BUILTS

- Interference/fit checks
- Conceptual design
- Tie-points & stress analysis
- Quick and accurate survey
- Future maintenance and upgrade planning
- Plan to construction comparison

## FABRICATION & CONSTRUCTION

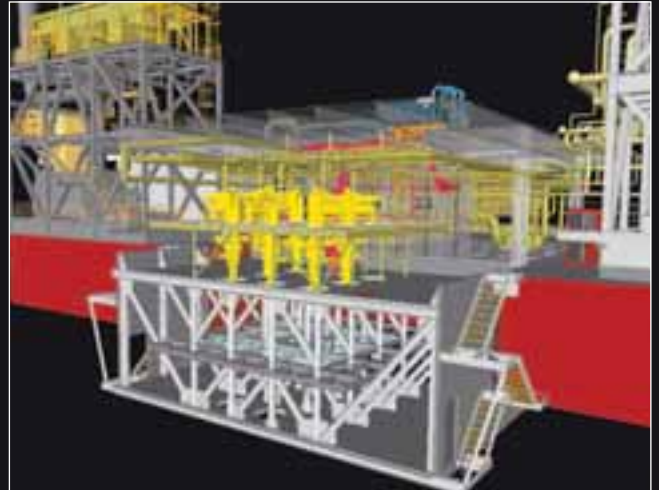
- Fabrication/mating QA
- QA construction inspection
- Quantity surveys
- Construction planning
- Routing analysis
- Progress archive
- Construction engineering

## OPERATION, MAINTENANCE & ASSEST MANAGEMENT

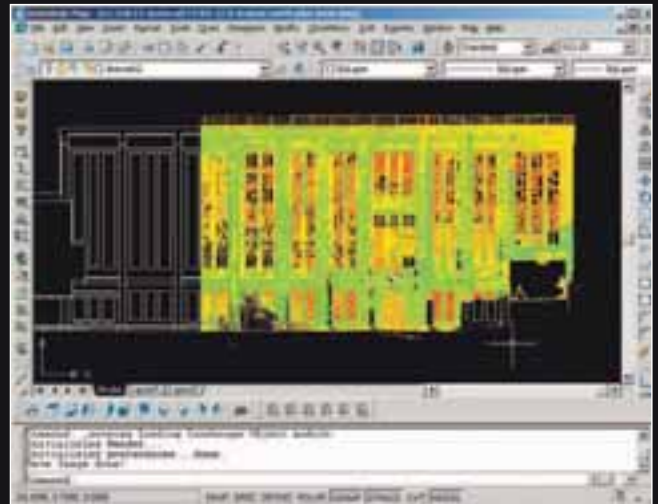
- Training
- Regulatory compliance
- Condition assessment
- Security planning

## ARCHITECTUAL DESIGN

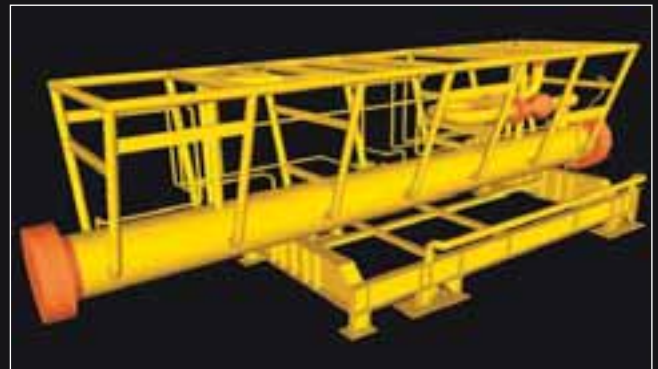
- Model existing structures for architectural design and analysis
- Façade mapping
- Modelling for new enhancements and installation
- Clash detection
- Cost effective planning



Completed model of the Ocean Legend



Designing plans off a point cloud data capture, East Perth Power Station



Completed model of a launcher



Application of train structure gauge in a point cloud cross section profile, Taipei Trupo Tunnel