

# McMULLENOLAN

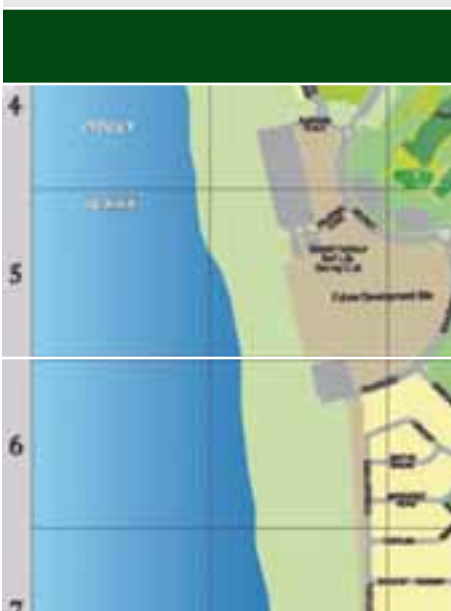
McMullen Nolan And Partners Surveyors Pty Ltd is a leading professional survey company servicing the Land Development and Spatial Industries.

Building its reputation as a market leader in the provision of survey services to the land development industry in Perth, Western Australia, the company has embraced the latest in technology advancements to extend its capabilities to include:

- Land and Hydrographic Survey
- 3D Laser Scanning and Visualisation
- Mapping and Solid Terrain Models
- Cartographics and Geographic Information Systems (GIS)

Operating throughout Australia and South East Asia, the company combines a wealth of industry experience with best practice policy ensuring that McMullen Nolan are **A Level Above The Rest.**

LAND SURVEY  
HYDROGRAPHIC SURVEY  
3D LASER SCANNING  
3D VISUALISATION  
MAPPING  
SOLID TERRAIN MODELS  
CARTOGRAPHICS  
GIS



McMullen Nolan offers an extensive array of land survey solutions to assist clients throughout the metropolitan and regional areas with their land development, construction, engineering and mapping requirements.

The company's dedicated team of experienced project managers, licensed and engineering surveyors, survey assistants and computing professionals ensure the company delivers personalised and innovative project solutions and services.

#### **Land Development Services include:**

- **Cadastral Surveys**
- **Base Mapping**
- **Services set out and as-constructed**
- **Land titling advice**
- **Sales Plans and Web Based Sales**
- **Commercial and Residential Strata Plans**
- **Data Management**

#### **Civil Engineering, Construction & Mapping Services include:**

- **Topographical and Detail Surveys**
- **Mining Surveys**
- **Civil Construction Surveys**
- **Audit Surveys**
- **Surface and Volume Surveys**
- **Photogrammetric Control Surveys**
- **Environmental Monitoring Surveys**
- **GPS Control**
- **Precise Geodetic Surveys**
- **Inshore Hydrographic Surveys**



Using a purpose fitted 6 meter power boat; McMullen Nolan's expertise in surveying and mapping solutions has extended to the offshore environment with our hydrographic survey services.



Operating in moderate open waters, the vessel is equipped with a digital hydrographic system including a dual frequency transducer for penetration of silty and muddied water, providing 0.02m accuracy in water depths ranging from 30cm to 30m.

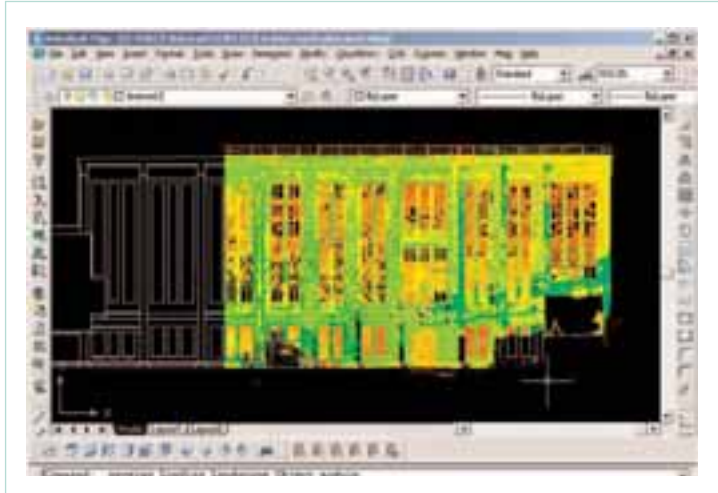
Real Time Kinematic (RTK) differential GPS positioning allows the vessel to work in any location via the use of a mobile base station.

#### **Hydrographic Survey Services include:**

- **Harbour maintenance**
- **River and Estuary surveys**
- **Debris and clearance surveys**
- **Beach and canal profiling**
- **Dredging and engineering surveys**



Providing a safer, more precise alternative to traditional survey and dimensional control methods, McMullen Nolan's 3D Laser Scanning services is able to capture, visualise and model complex structures, sites and features.



Applicable for any situation requiring complete and accurate data with quick acquisition times, laser scanning operations can be conducted from a distance of 100m with 6mm accuracy acquiring precise data in potentially unsafe working environments in both day and night conditions.

Acquired data can be modelled and rendered for easy integration into CAD and various modelling software such as PDMS, AutoPlant and Navisworks.

### Applications benefiting from the company's 3D Laser Scanning

#### Services include:

- Dimensional Control Surveys
- Structural Tie-Points
- Fabrication & Construction Quality Assurance
- As-built Surveys of Plants and Facilities
- Conceptual Designs Clash Detection
- Public Infrastructure Modelling
- Stress Analysis
- Architectural Facades
- Historical and Heritage

Adopting the latest in visualisation technology, McMullen Nolan's 3D Visualisation services provide clients with an interactive platform to view their data in two unique environments.



An interactive 3D visualisation solution,

Skyline is a powerful communication tool for all forms of industry. McMullen Nolan is able to provide clients with a specific 3D fly thru displaying highly realistic detailed scenes from any angle with as little or as much information overlays.



A comprehensive site visualisation system,

Mentoria allows users to navigate explore and visit real locations in a dynamic environment. With it's unique interactive platform for user operation, Mentoria applications include sales & marketing, security, training and facility management activities.



Servicing all facets of the land development industry, McMullen Nolan provides high quality mapping services and related products including Topographic Mapping, Orthophotos, Colour Balanced Mosaics and Digital Terrain Models.

With attention to detail and adopting the latest state-of-the art technologies, the company's dedicated mapping team have been involved with some of the largest and diverse projects within Australia and abroad.

Providing a full turn-key solution to our client's greatest advantage, both digital and hard copy deliverables are made available through the company's in-house cartographic print-on-demand map production capabilities.

**Mapping Services include:**

- **Triangulation of Aerial and Satellite imagery**
- **Digital data capture**
- **Digital Elevation Model generation and editing**
- **Orthophotos and seamless colour balanced mosaics**
- **Stockpile Volume Calculation**
- **Satellite Imaging, Calibration and Registration**



Solid Terrain Models combines flat maps, satellite or aerial imagery and 3-dimensional physical terrain models to provide clear display communication of information.

An actual physical model that people can gather around, touch and view from every angle, Solid Terrain Models allow for a deeper understanding of the information presented. Precisely cut in dense polyurethane foam, the models hold exacting detail, giving a complete realistic rendering of land formations providing a level of understanding not found in any computer model, ordinary topographic model or flat map.

**Solid Terrain Models are suitable for:**

- **Homeland Security and Emergency Response**
- **Federal, State and Local Government departments**
- **Land and Estate Developments**
- **Museum Exhibitions**
- **Education**



Providing a complete range of print and electronic presentation solutions, McMullen Nolan is able to maximise the value of client data with graphical representation through the company's specialist cartographic services.



From initial graphic design, content creation and final print production, the company's efficient pricing structure and ability to work to stringent deadlines provides personalised graphic solutions to clients when it matters most.

Housing a team of cartographers, computer programmers, graphic designers and web developers, McMullen Nolan provides personalised print and electronic marketing solutions for integration with existing client sales and marketing activities.

**Cartographic Services include:**

- Estate Plans and Street Directories
- Sales and Individual Site Plans
- Promotional Marketing Material
- Specialty Maps
- 3D Display Models
- Web development and Hosting
- Short and Long print runs
- Data Conversion



Strengthening the company's Geographic Information Systems (GIS) capabilities, McMullen Nolan has teamed with leading GIS specialists, Digital Mapping Solutions, to provide GIS services to a wide range of public and private sector clientele.

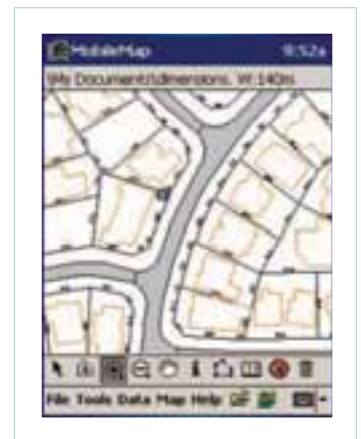
Developed in-house, the company's MobileMap, InterMaps and IntraMaps products allow the user to have desktop functionality while in the field, internet connectivity to view data from remote locations and to deliver spatial data across corporate intranets.

In addition to product development the company provides comprehensive training and support services to ensure clients maximise their GIS investment.



**GIS Services include:**

- Application development and support
- Web solutions
- Database design and development
- Data capture and conversion
- System Installations and configurations
- Consulting Services



Founded in 1989, McMullen Nolan has built its reputation through innovative and personalised service solutions.

In recognition of McMullen Nolan's involvement in some of the largest and complex developments undertaken in Australia, the company has been the recipient of numerous Urban Development Institute of Australia (UDIA) Awards for Excellence.

A quality endorsed company accredited to the ISO 9001:2000 standard, the philosophy at McMullen Nolan is to provide long term service to clients through continual development and teamwork. The company is committed to maintaining the highest standards of customer service and project delivery.

## HEAD OFFICE

McMullen Nolan And Partners  
Surveyors Pty Ltd  
Level 2, Suite 11, 2 Hardy Street  
South Perth WA 6151  
Phone: +61 8 9474 1099  
Fax: +61 8 9474 1093  
Email: [maps@mapsurvey.com.au](mailto:maps@mapsurvey.com.au)

## LAND SURVEY

[surveying@mapsurvey.com.au](mailto:surveying@mapsurvey.com.au)

## HYDROGRAPHIC SURVEY

[hydro@mapsurvey.com.au](mailto:hydro@mapsurvey.com.au)

## 3D LASER SCANNING

[laserscan@mapsurvey.com.au](mailto:laserscan@mapsurvey.com.au)

## 3D VISUALISATION

[3dvis@mapsurvey.com.au](mailto:3dvis@mapsurvey.com.au)

## MAPPING

[mapping@mapsurvey.com.au](mailto:mapping@mapsurvey.com.au)

## SOLID TERRAIN MODELS

[solidmodel@mapsurvey.com.au](mailto:solidmodel@mapsurvey.com.au)

## CARTOGRAPHICS

[graphics@mapsurvey.com.au](mailto:graphics@mapsurvey.com.au)

## GIS

[gis@mapsurvey.com.au](mailto:gis@mapsurvey.com.au)

Go online to view our latest news, case studies  
and downloads [www.mapsurvey.com.au](http://www.mapsurvey.com.au)

